

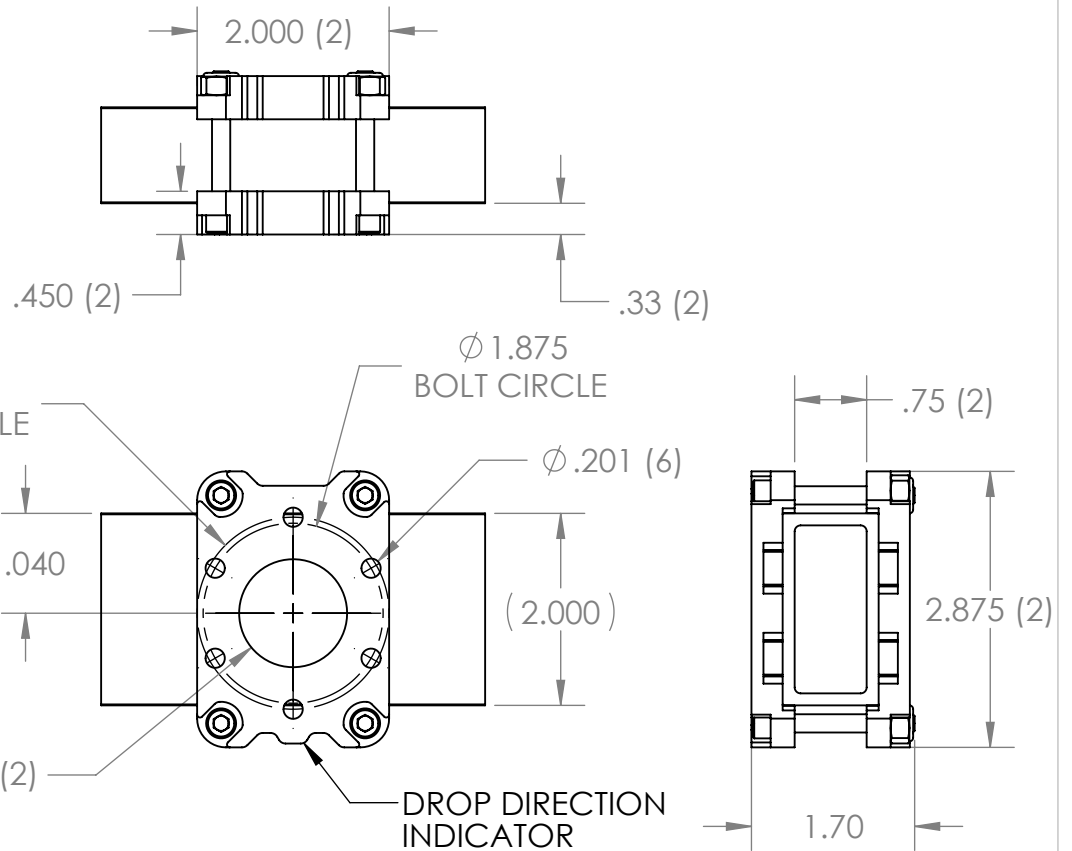
| REVISION HISTORY |                |          |             |
|------------------|----------------|----------|-------------|
| REV.             | DESCRIPTION    | DATE     | DRAWN BY    |
| 1                | ORIGINAL PRINT | 1/6/2022 | N. LAWRENCE |

QTY 2 WCD BEARING BLOCK  
(am-4560)

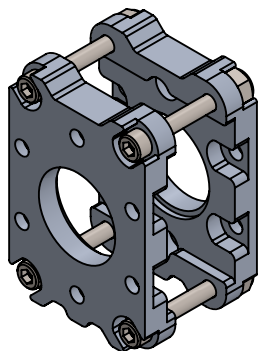
QTY 4 10-32 NYLOCK NUT  
(am-1042)


2x1 AL TUBE  
NOT INCLUDED  
(am-4205-6)

QTY 4 10-32 x 1.50" SHCS  
(am-1014)



\*\*\* SEE CAD FOR ADDITIONAL TOOLPATH INFO\*\*\*



| UNLESS OTHERWISE SPECIFIED:  |  | COMMENTS:                           |         |  |            |         |   |
|--|--|-------------------------------------|---------|---|------------|---------|---|
| <b>DIMENSIONS ARE IN INCHES</b>  |  | DUAL DIMENSIONS ARE IN MILLIMETERS. |         |   |            |         | <b>TITLE:</b><br>WEST COAST DRIVE<br>STYLE BEARING BLOCK<br>KIT USAGE |
| TOLERANCES:<br>FRACTIONAL ±1/16<br>ANGULAR: MACH ±1°<br>ANGULAR: BEND ±5°<br>ONE PLACE DECIMAL ±0.1<br>TWO PLACE DECIMAL ±0.01<br>THREE PLACE DECIMAL ±0.005<br>FOUR PLACE DECIMAL ±0.0005 |  | BREAK ALL SHARP EDGES.              |         | SIZE  | DWG. NO.   | REV     |   |
| MATERIAL 6061-T6 AL BLOCKS<br>STEEL HARDWARE   |  | CHECKED                             | NAME NM | DATE  | <b>A</b>   | am-4576 | 1   |
| FINISH   |  | ENG APPR.                           |         |   |            |         |   |
| DO NOT SCALE DRAWING   |  | MFG APPR.                           |         |   | SCALE: 1:2 |         | SHEET 1 OF 1  |
|  |  | Q.A.                                |         |   |            |         |   |